

Bournes Farm Barn, Binfield Heath  
Parish: Shiplake

This investigation was carried out by kind permission of the Phillimore Estate.

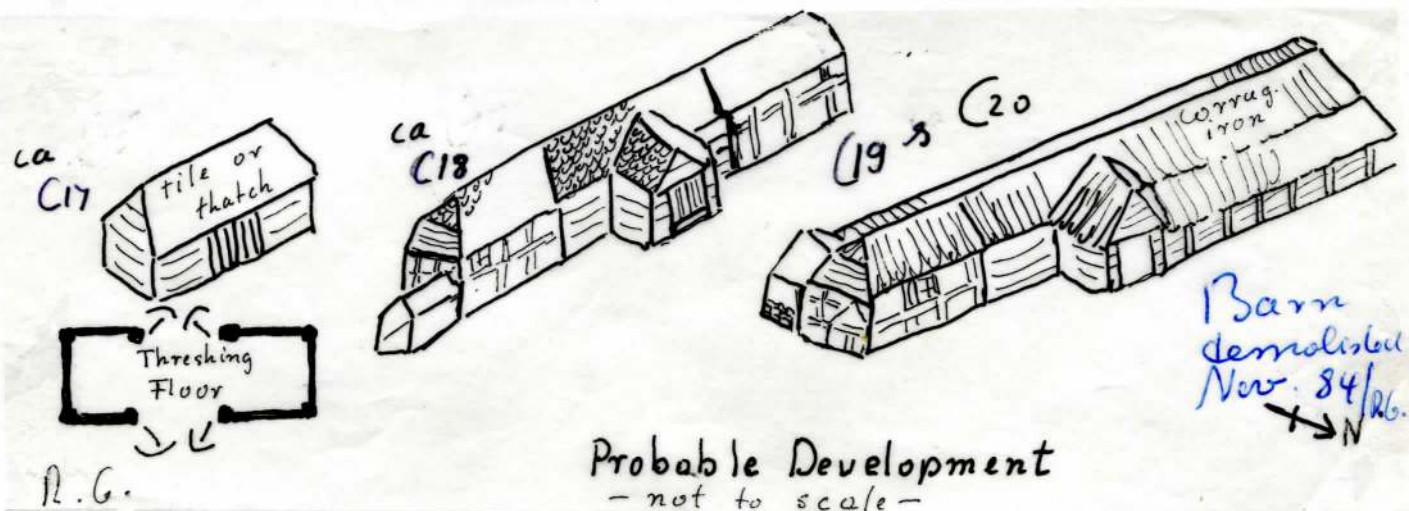
First mention of 'Bournes Farm' is in the 1678 Poor Rates when John Breach had to pay 7 sh ( the rate was 4 sh per yard land). - Bones Lane, the ancient track which runs alongside the farm, bears the same name, as do several fields.

According to the 1841 Tithe Records it was farmed by R. Bullock and belonged to Mary Ann Vaughan. He lived in a house some distance away. The house, which from its proximity to the barn seems to be the old farm house, is a timber framed building with thatched roof of probably 16th century date, now a public house. It is first mentioned in the churchwardens' accounts in 1764 as a public house.

Mr. Keeble was the tenant farmer from 1948 until about 3 years ago. He took over the tenancy when Lady Phillimore offered it to him. He started off with 20 'rented' milk cows, eventually increasing his milk herd to 70. Initially he used the old milking parlour in the outshut which runs the length of the south wall of the barn. The cows were fed from the barn through openings inserted in the stud wall. A railway track helped with the removal of dung from the manure passage. In the 50s he had a very up-to-date milking parlour built from breeze-blocks. He described the land as being very poor and lacking water. - The water supply for the farm came very probably from the pond marked on the 1913 OS map just in front of the "Bottle and Glass" P.H., now a car park.

### Architectural evidence

The barn had originally three bays with a central threshing floor. The sole plate rests on a very low brick and flint plinth, only just raising it above the ground. The trusses are of queen strut to the collar construction with clasped purlins. It is weatherboarded outside, some panels are very large and irregular. Two unequal bays of timber framing with brick nogging were added on each side. Here the timbers rest on a substantial brick and flint plinth of ca. 0.50 m. Both ends are half hipped. A porch was added on the northern side.



The overall dimensions are 21.65 m by 5.80 m (excl. the porch). Two outshots, one a milking parlour, one a cart or shelter shed were added. The latest addition is a small modern brick-built cross wing adjoining bay I. The bricks in the panels and plinth are irregular in shape and size they mainly measure 0.23 by 0.054. Modern bricks of 0.225 by 0.07 were used for repairs.

Many timbers show signs of alterations and repairs. There is a lot of strap iron work near the porch. The porch roof still shows some roof tiles, although the barn is now covered with corrugated iron, quite a lot of which is missing.

The barn is no longer used, and Bournes Farm with its many old and new buildings is no longer a farm in its own right, but just used for storage purposes.

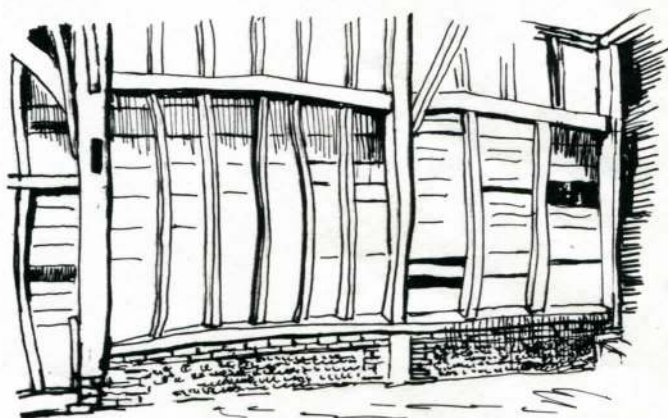
Recorded by: A. Cottingham, J. & J. Howard, S. Bromilow, R. Gibson  
Report by: R. Gibson

A copy of this survey will go to the Royal Monuments Commission, London, and a further copy to the Oxfordshire County Museum, Woodstock.

### Bournes Farm Barn



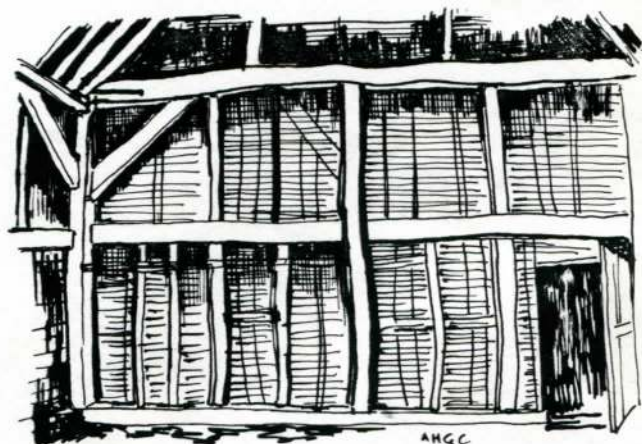
Looking East from truss E



Wall section E1 to F1



Wall section part of F to D



Wall between Bay I & II

Bournes Farm Barn, Binfield Heath

SU 74479



Truss C, looking west



Truss E, looking towards D & C.



Wall between trusses F and E (brick) and E & D (timber). Note low wood-sill



Truss C, porch side



Binfield Heath  
Bournes Farm,  
Barn, North-West  
gable,  
looking towards  
'Bottle & Glass' P.H.



South-East End  
showing brick  
and timber ex-  
tension and  
part of the origi-  
nal three-bay  
barn with  
weather boarding,  
and added porch.  
N.B. Some roof  
tiles still in situ.



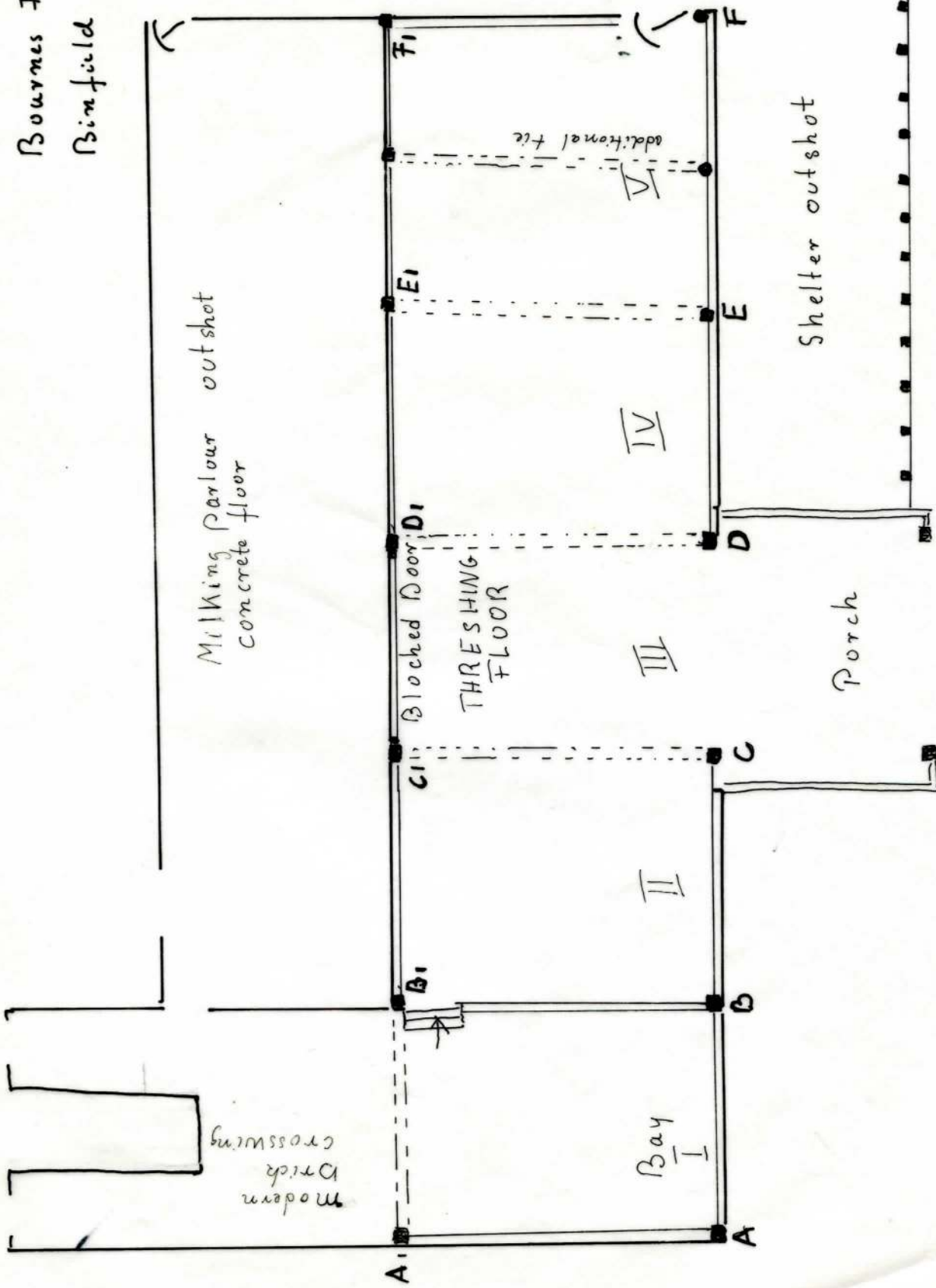
Looking at the  
barn from 'Bottle  
& Glass' P.H.  
which is very  
probably the  
original Bournes  
farm house.

1983 R.G.

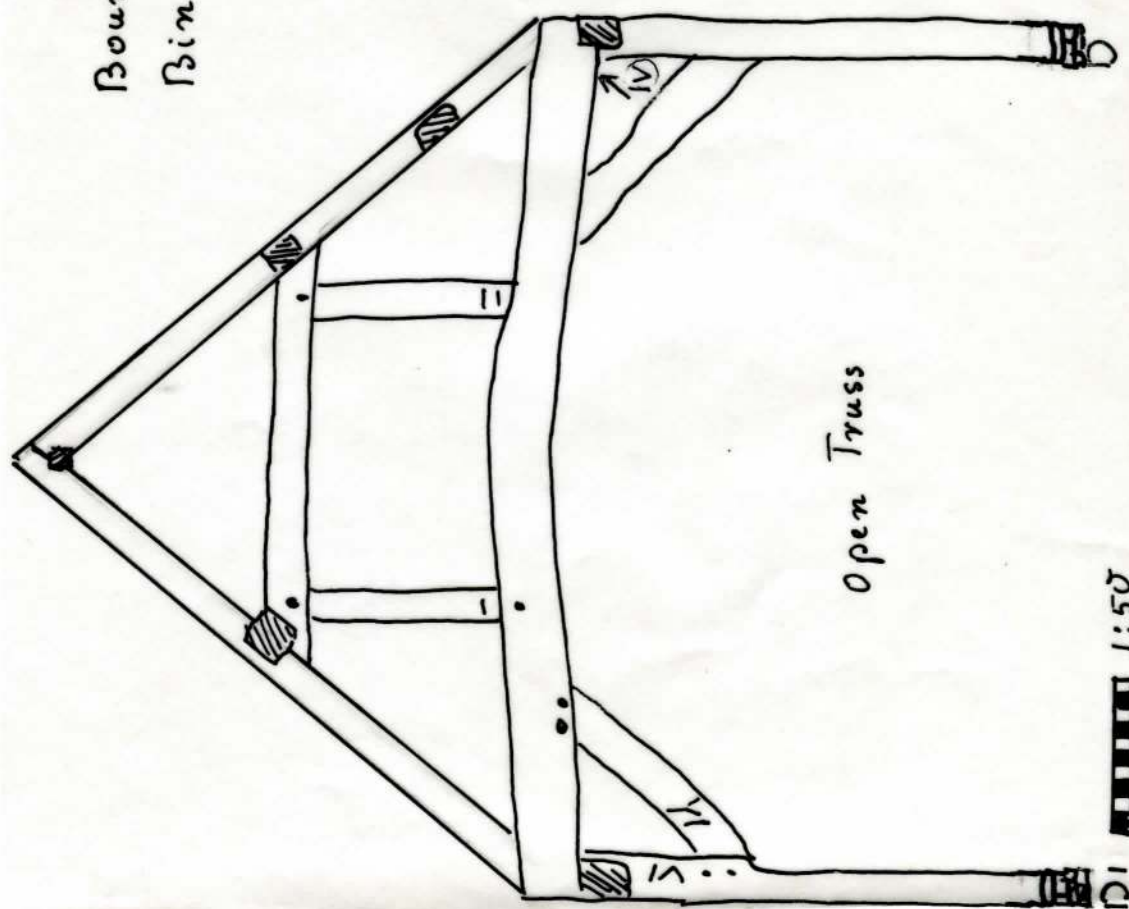
Bourmes Farm Barn

Binfield Heath SU 744 793

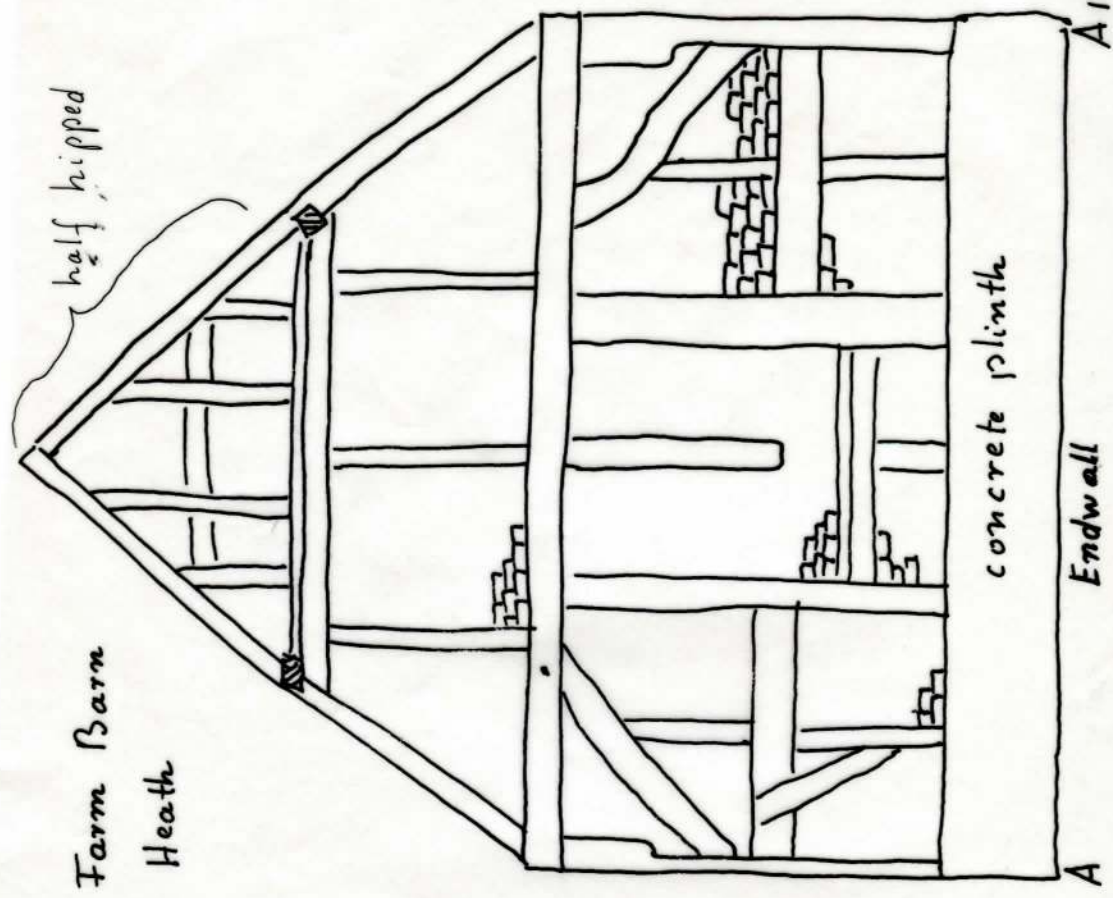
1:100  
1 m



1983/A. Gibson

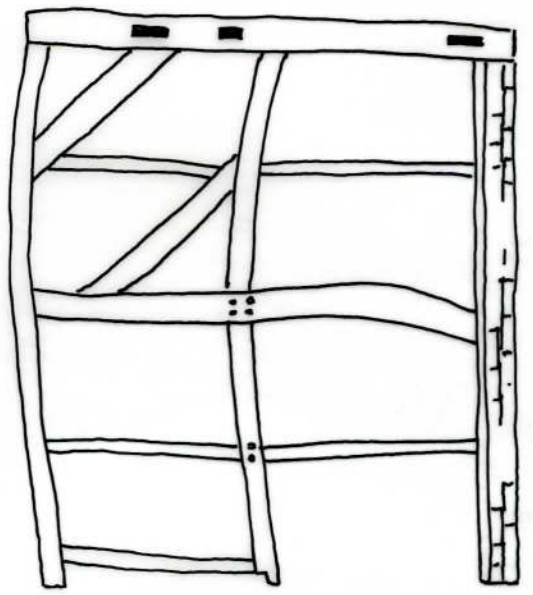
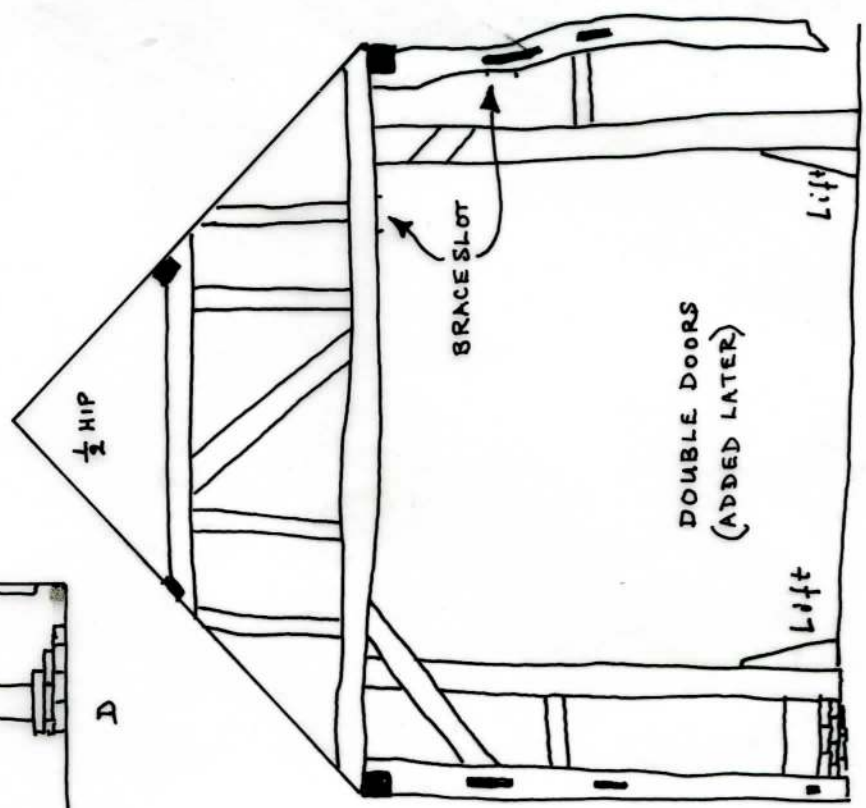
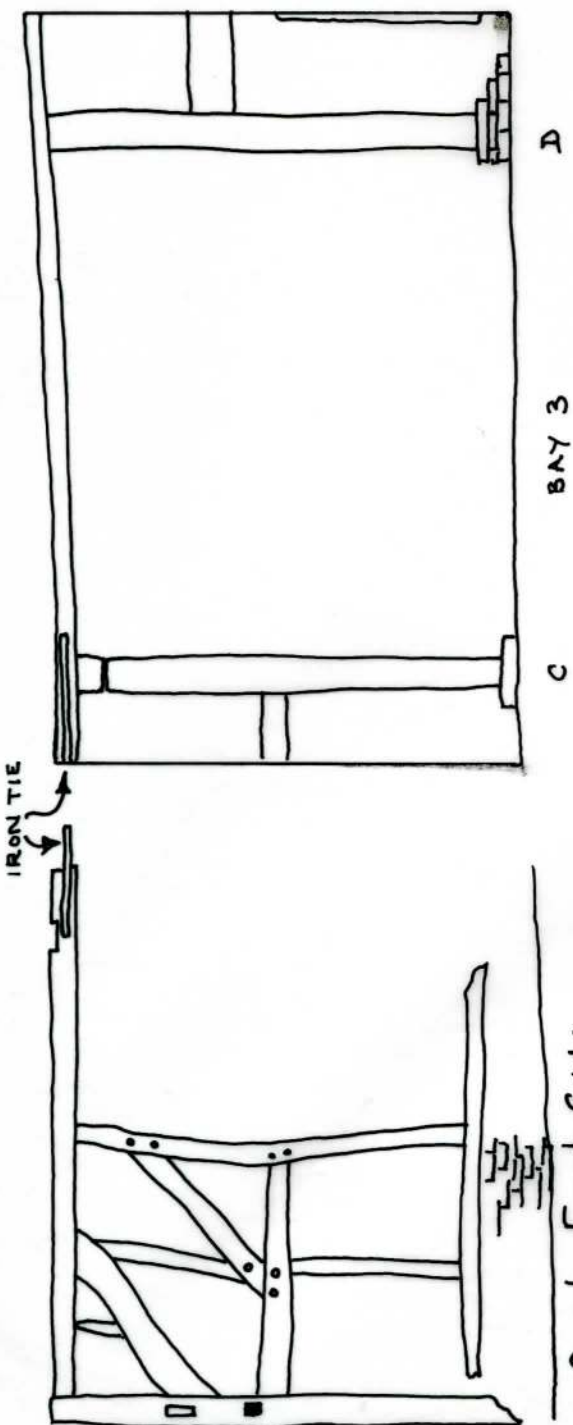


Bourne's Farm Barn  
Binfield Heath



1983/R. Gibson

Bournes Farm Barn  
Binfield Heath

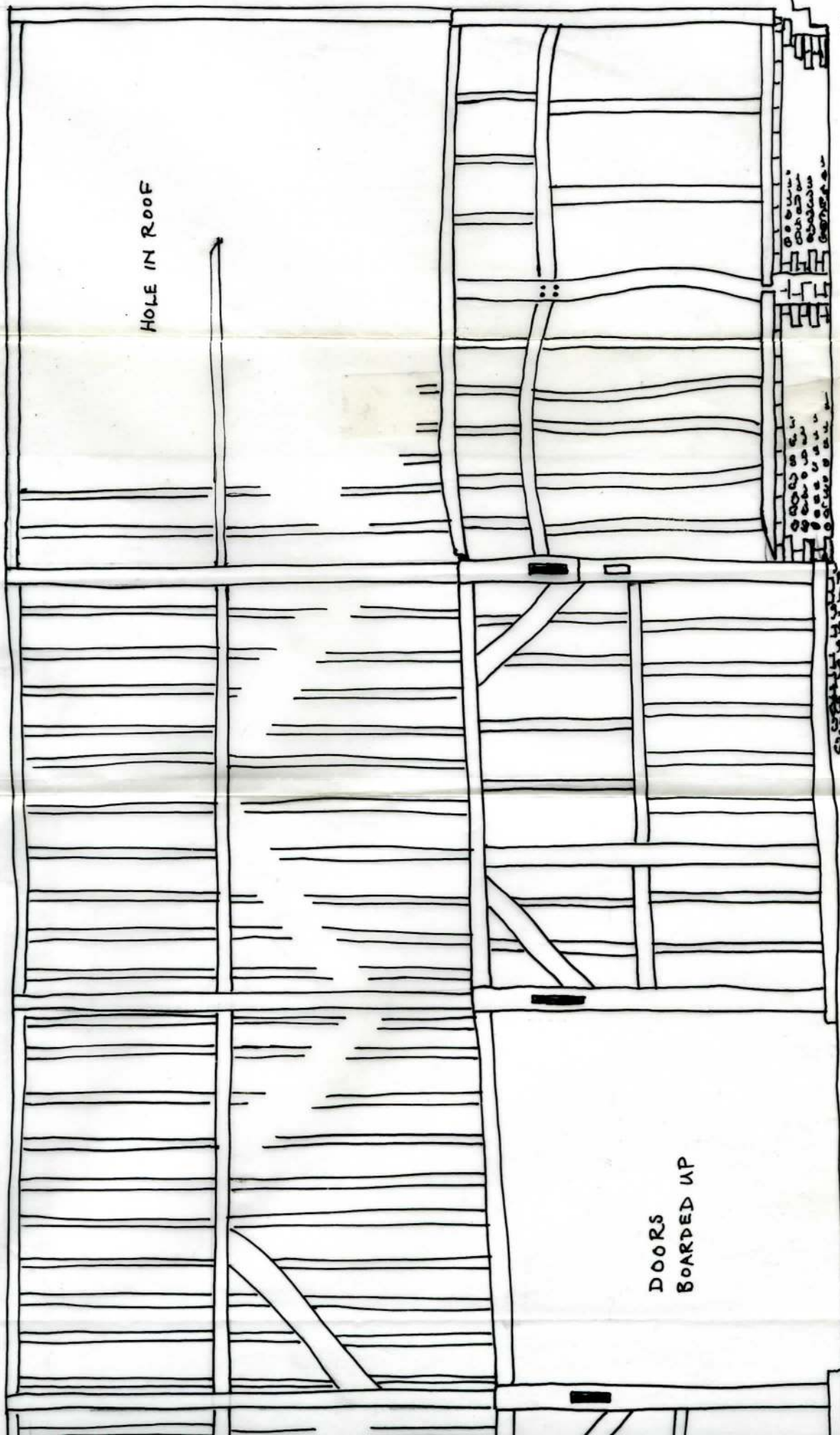


PORCH NORTH SIDE (BARN ENTRANCE INSIDE)

Bournes Farm Barn  
Inside Elevation



(SECTION)



HOLE IN ROOF

DOORS  
BOARDED UP

C1  
OR SLIGHT FOOTING OF STONES

D1

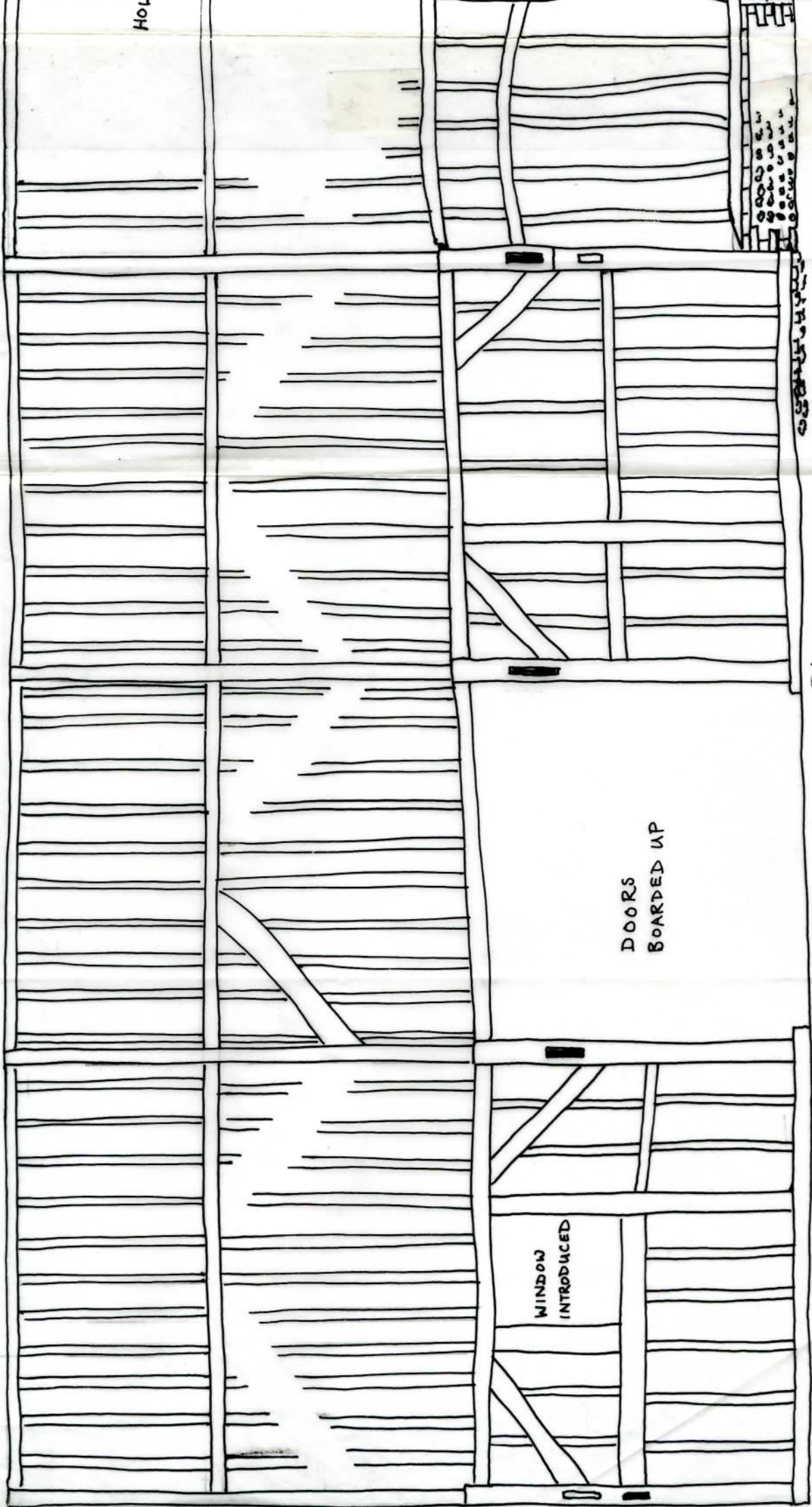
← GROUND SLOPES DOWN

E1

F1



(ONLY ONE WIND BRACE IN POSITION)

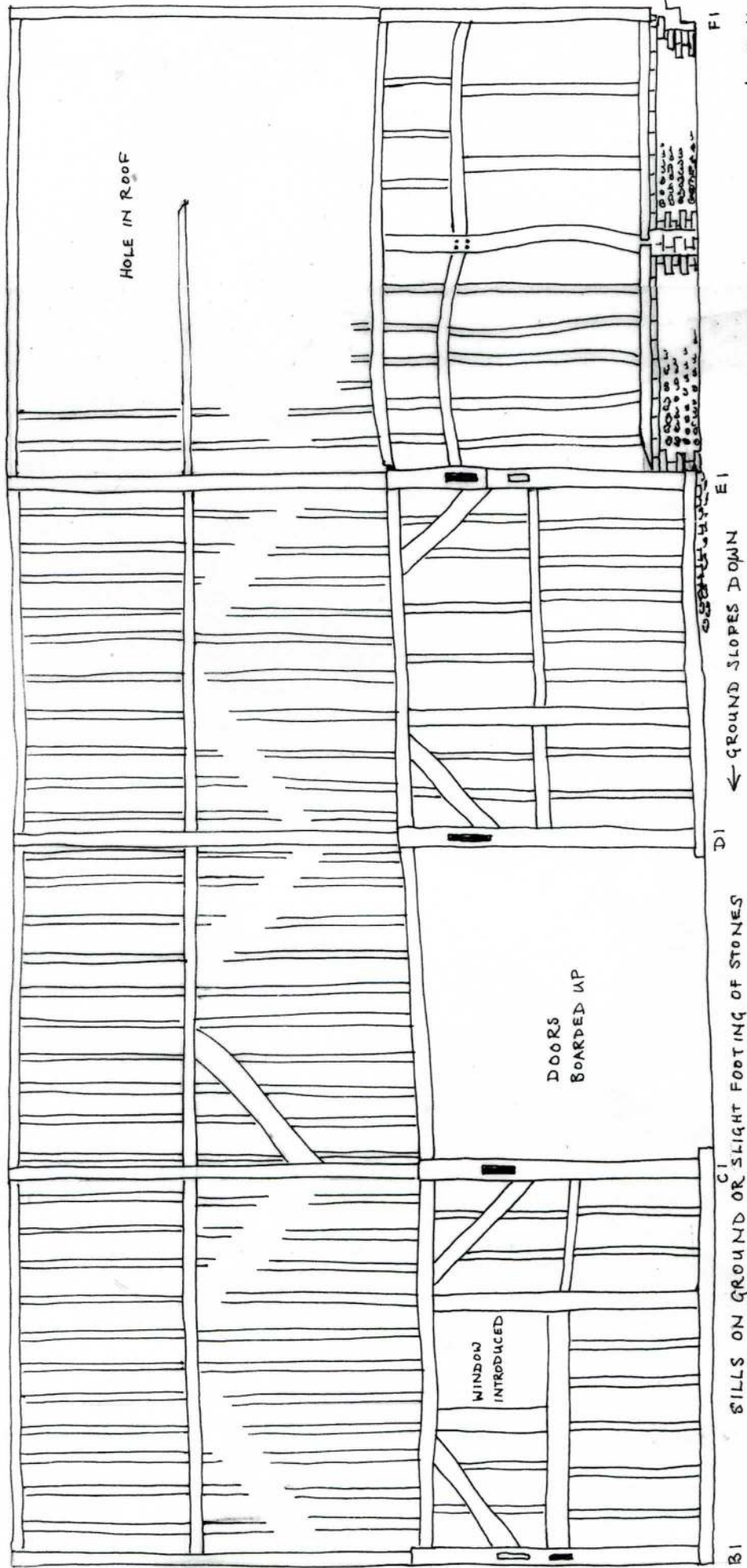


BI C1 E1  
← GROUND SLOPES DOWN

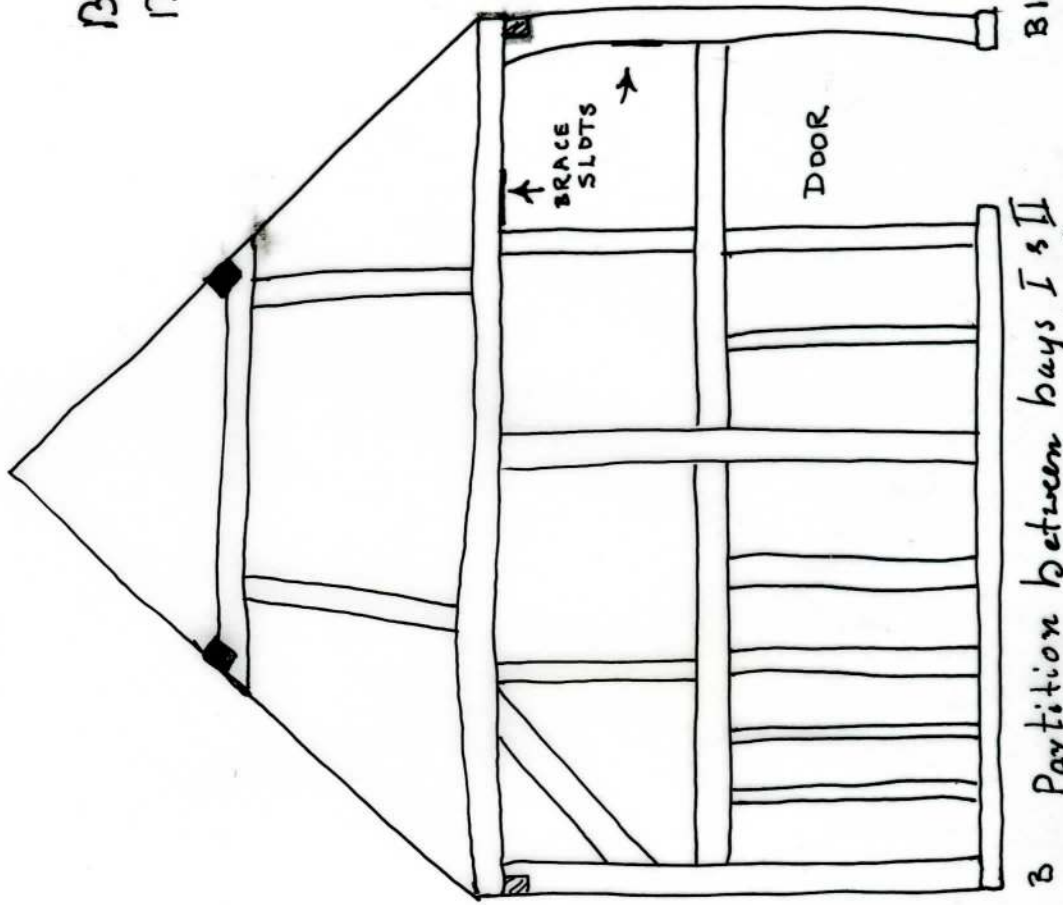
Bourne Farm Barn  
Inside Elevation



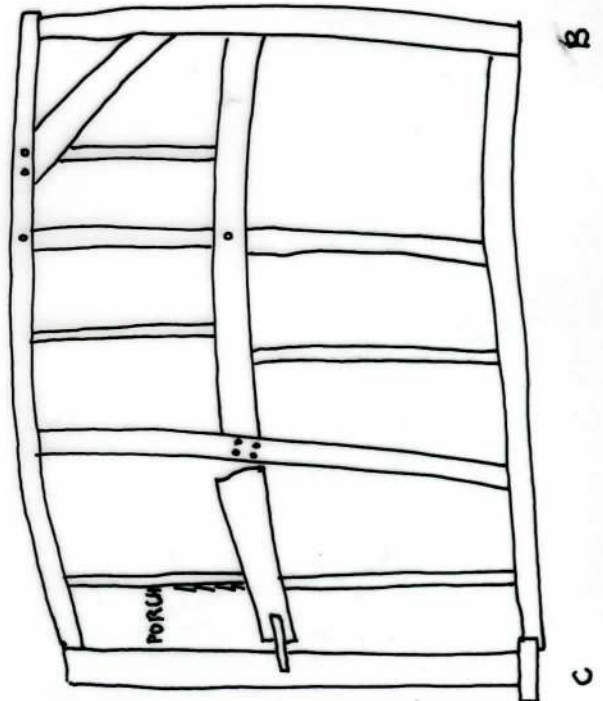
(ONLY ONE WIND BRACE IN POSITION)

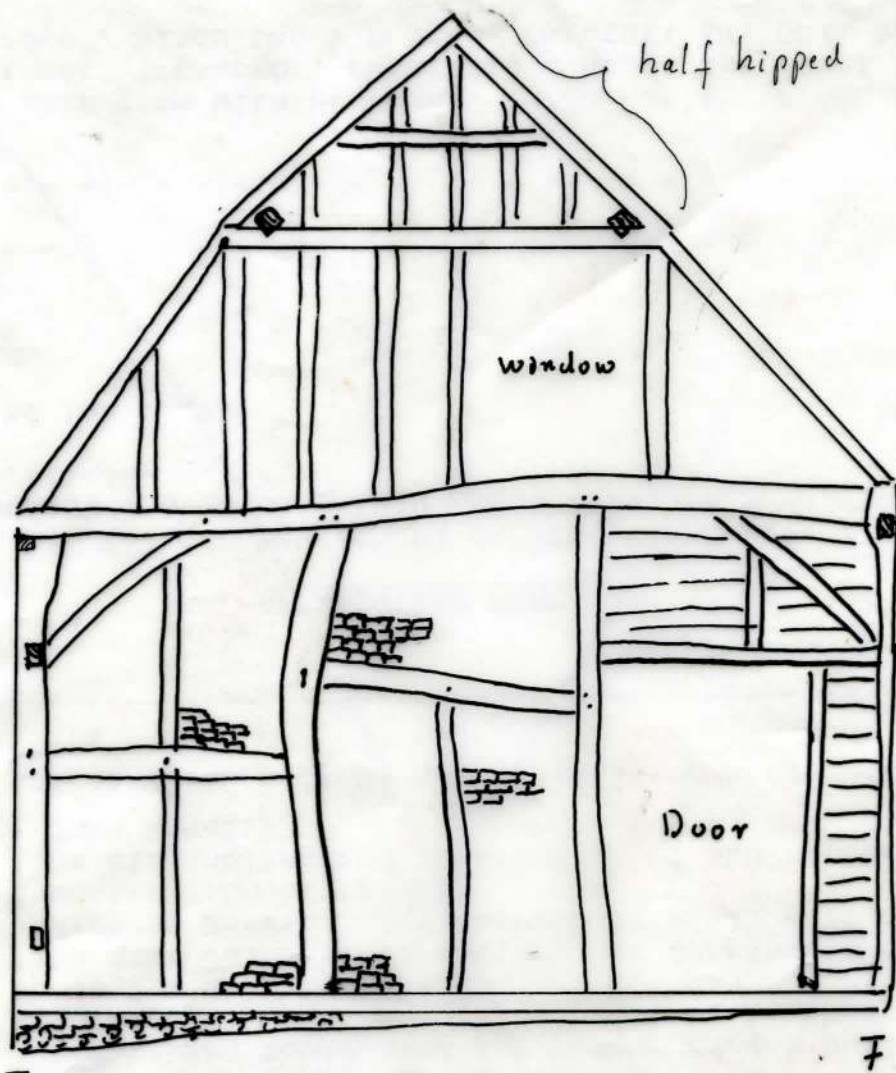


Bournes Farm Barn  
Binfield Heath



B Partition between bays I & II  
(originally endwall of 3-bay barn)



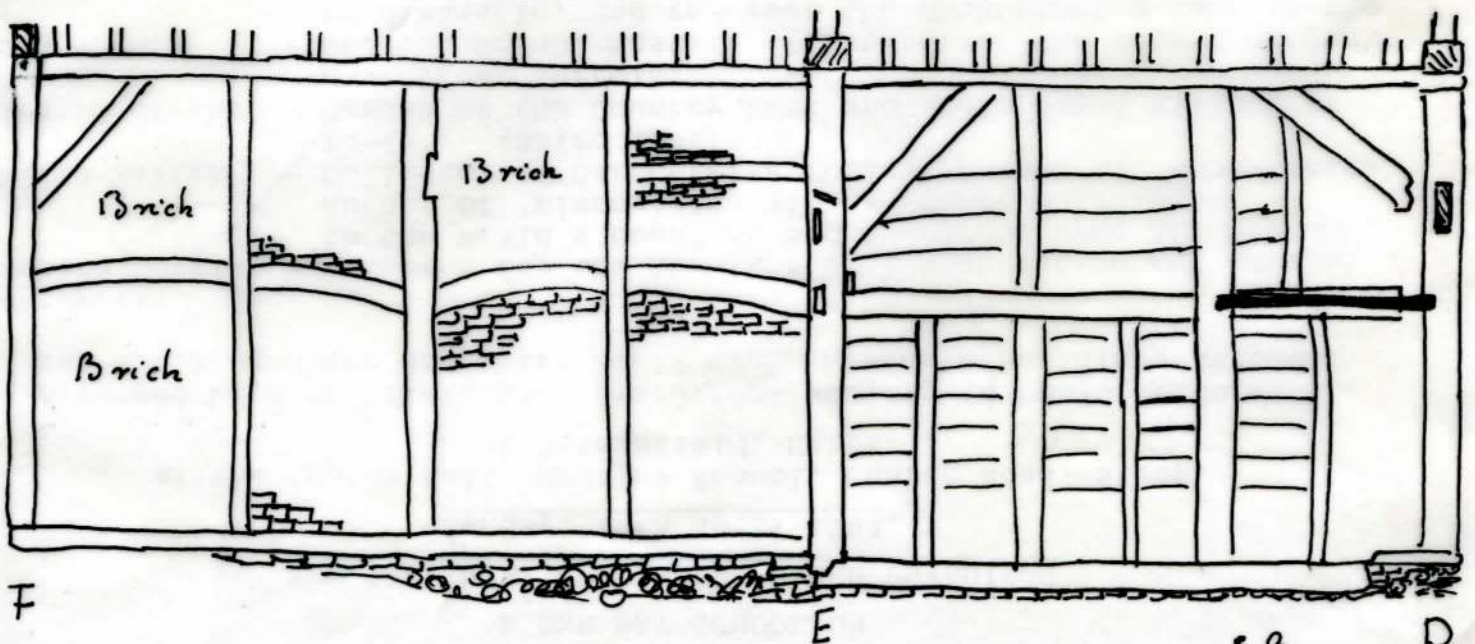


F1

Endwall

F

1983/S. Bromilow

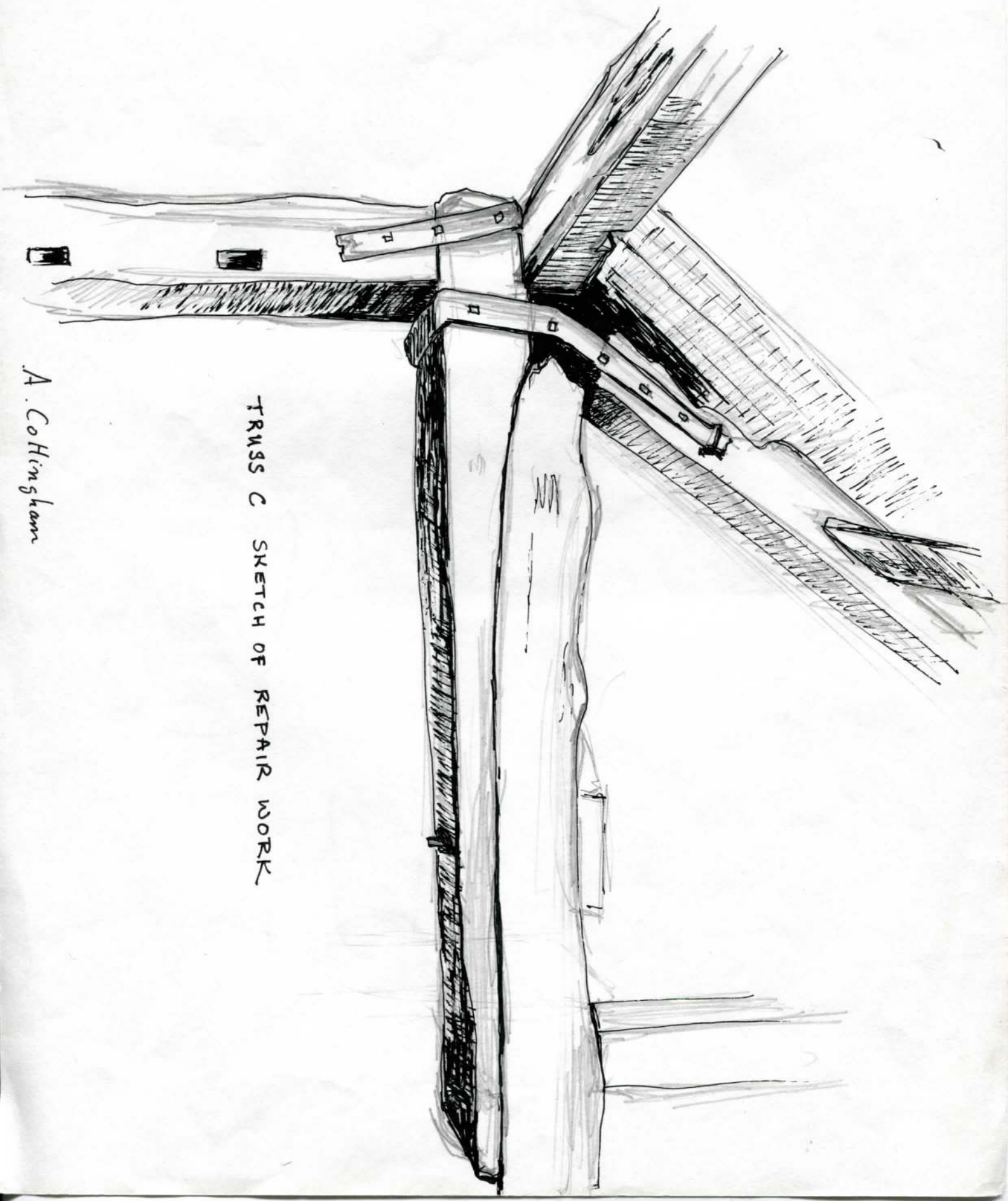


F

E

S.B.

D



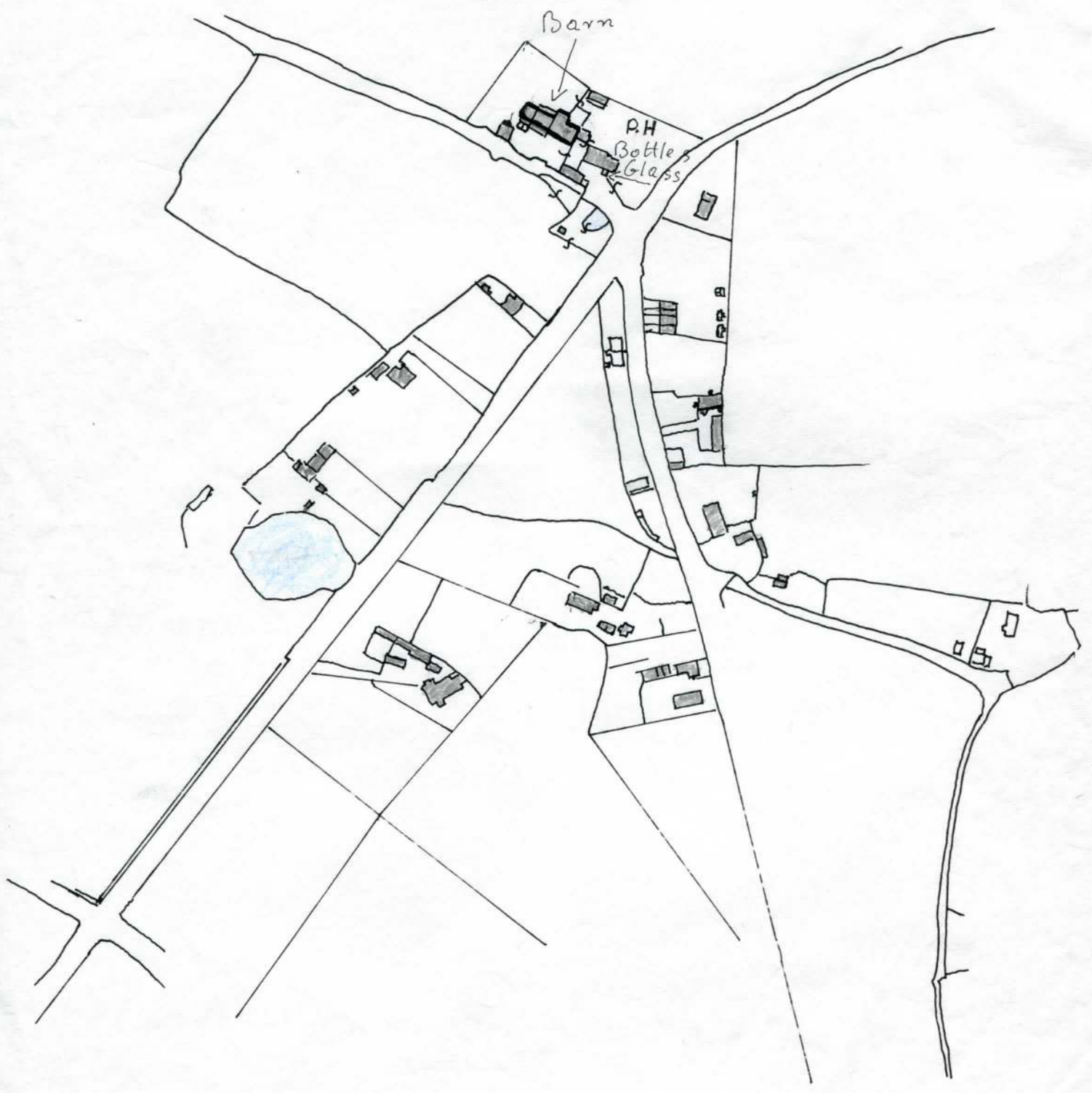
TRUSS C SKETCH OF REPAIR WORK

A. CoHingham

Copy from O.S 1913  
25.344 to 1 mile

7<sup>N</sup>

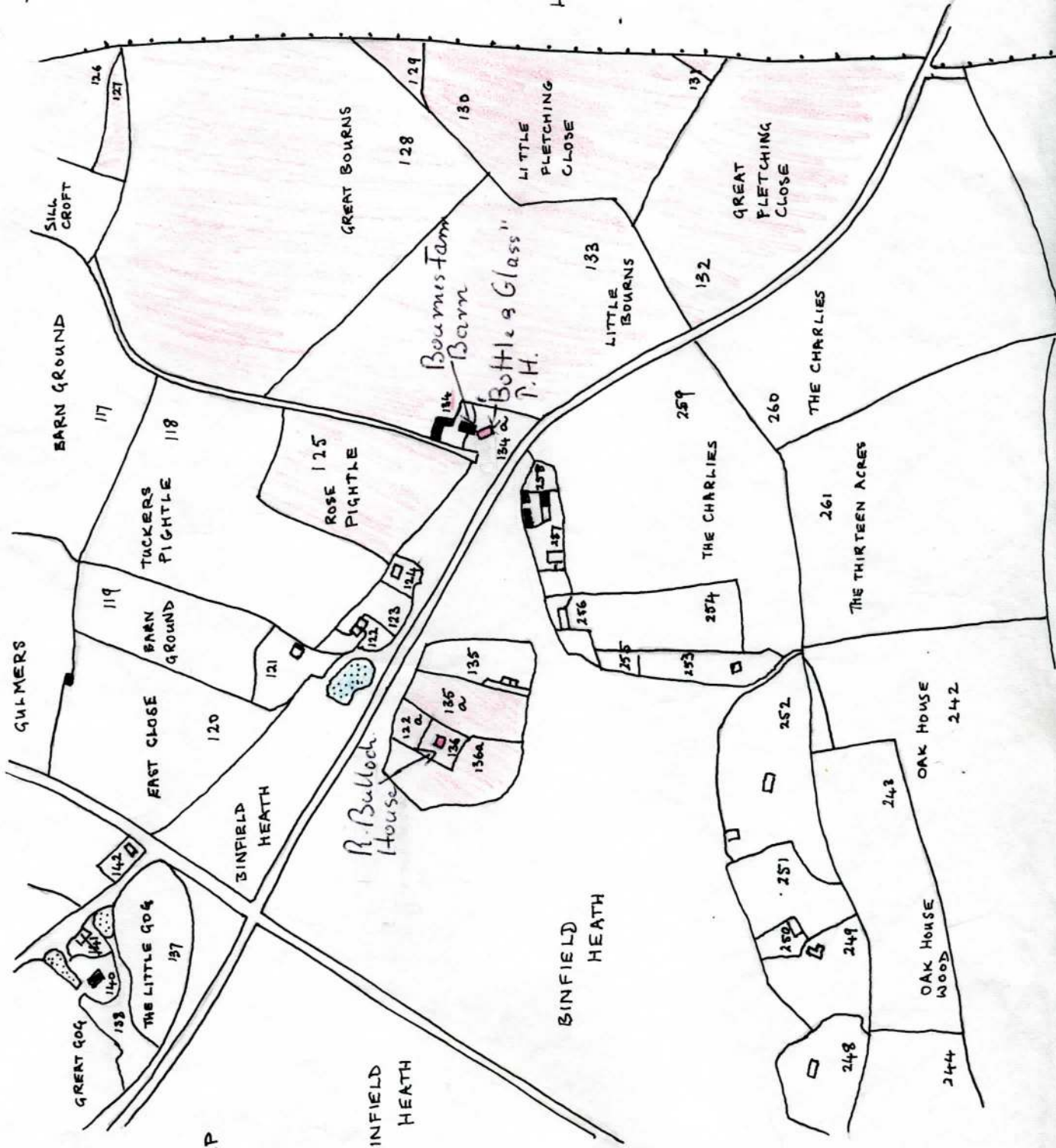
Binfield Heath  
Bournes Farm SU 744 793





Fields coloured  
pink belong  
to 'Bourne Farm'

HARPSDEN



PART OF  
SHIPLAKE TITHE MAP  
1841 from the copy in  
The Bodleian Library

- WATER
- HOUSE
- BARN OR SHED



Bournes Farm  
Barn c.1983/84







pre 1984 photos. by H. Wrist  
landlord  
of Botts Glass